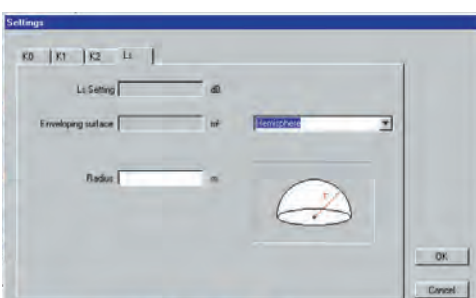
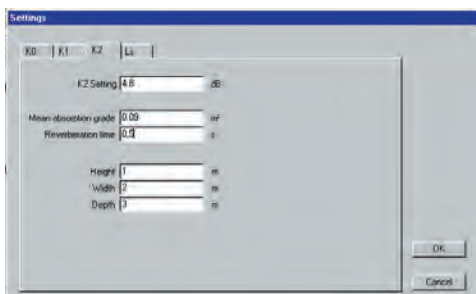
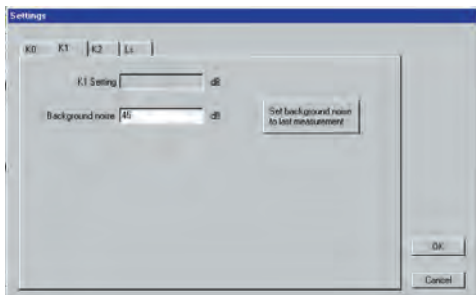
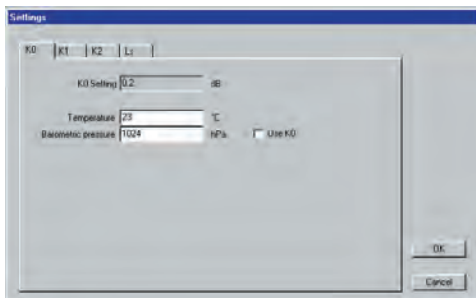
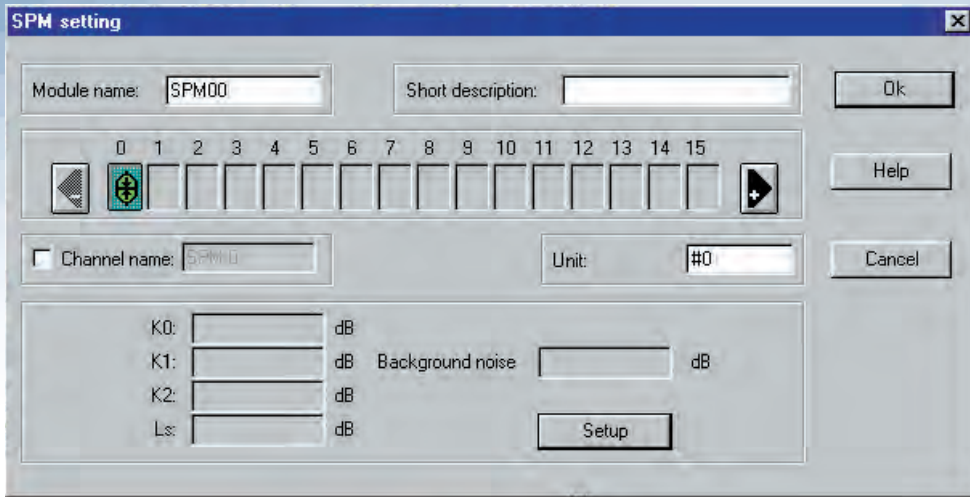


SPM

Sound Power Measurement Module



Sound Power Measurement Module

The sound power measurement module can calculate the sound power for a maximum of 16 input channels (from the sound level measurement module) 1 output channel, switchable to:

- Measurement surface sound power.
- Sound power level (SPL) of all active channels.

The module properties allow you to set the four corrective values in dB or use the "wizards" to determine them:

K0: Correction value for air pressure and temperature. Direct input of the dB value or pressure and temperature. (Only necessary for class 1 measurements according to DIN 45 635.)

K1: Correction value for extraneous noise correction (background noise, signal-to-noise-ratio). Direct input of the dB value or taken from last measurement.

K2: Correction value for environment feedback (reflections). Direct input of the dB value or input of the room's metrics:

- volume
- reverberation time ...

Ls: Correction value for for the enveloping surface. Direct input of the dB value or input of the surface metrics (guided with graphics). Like DIN (2a, 2c, b)

- Spherical, hemisphere, quarter globe
- Cuboids (detached, at a wall, at a wall and ceiling)

The module works according the following standards: DIN 45 635, DIN EN 23 741, ISO 3741, DIN EN 23 742, ISO 3742, DIN EN 23 744, EN ISO 3744, DIN EN 21 680, ISO 6395