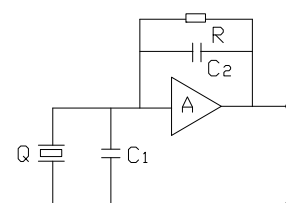


Applications

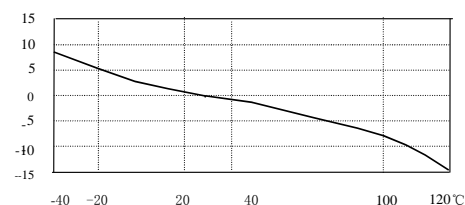
- Building Vibration Monitoring
- Earthquake Detection
- Structural Testing of Bridges
- Floor Vibration Monitoring
- Geological Formation Studies
- Foundation Vibration Monitoring



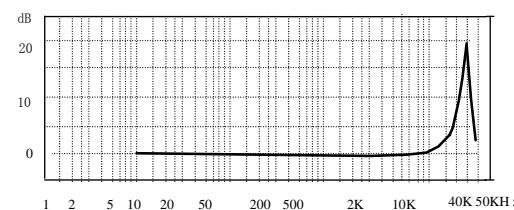
Axial Sensitivity(20±5 °C)	10V/g
Measurement Range(peak)	± 0.5g
Transverse Sensitivity	≤5 %
Frequency Response(0.5dB)	0.1 to 500 Hz
Mounting Resonance Frequency	5,000 Hz
Temperature Response	Refer to the temperature curve
Polarity	Positive
Operating Temp. Range	-54 °C to +121 °C
Shock Limit	± 500g
Operating Voltage (constant-current source)	+18 to +28 V(DC)
Operating Current	+2 to +10 mA
Noise	< 20 μ Vrms
Thermal Transient Sensitivity	10mg/°C
Output Impedance	< 100 Ω
Offset Voltage	11VDC±1.5V
Resolution	0.01mgrms
Dynamic range	± 5Vp
Weight	250g
Case Material	Stainless steel
Mounting Method	M8
Sensing Element	Piezoelectric ceramics P5
Structural Design	Loop shear
Output	M5
Dimensions	Φ 40x48mm
Accessories:	
Certificate	Calibration parameter, frequency response curve
M8*10 bolt, Protection cap	one



Circuit diagram



Temperature Response Curve



Frequency Response Curve